

# Linx 8920



## Code more information, and on faster lines, with the Linx 8920.

The Linx 8920 CIJ printer provides flexible coding with up to 5 lines of print across a wide range of production line speeds, and with fewer maintenance interventions than other CIJ printers. With a simple, touch screen interface, and unique on-screen system monitoring with extended service intervals, the Linx 8920 is designed to make your coding life easier.

## Easy to use for quick code setup and operation

- Store up to 50 named line settings – for quick retrieval at product changeovers; settings can be transferred between printers with a USB flash drive
- Large, icon-driven high-resolution touch screen, with at-a-glance production-rate visibility

- Customisable top screen, one touch operation for common tasks, on-screen message prompts for faster, accurate code setup
- Simple, one-touch, fluid cartridge refills during printing – no mess, no tools, no mistakes
- Self-service with an on-screen Wizard which guides operators through the service module change process – for a quick, engineer-free service.

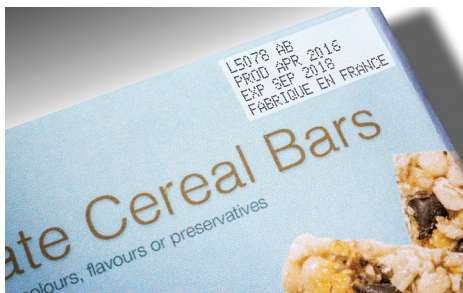
## Reliable coding for longer

- Extended service module change intervals up to 18,000hrs/24 months – code for longer without interventions
- Advanced System Monitoring – internal monitoring helps to avoid unscheduled stoppages between service module changes – reliable coding for longer
- Quick, clean startups every time – robust, completely sealed printhead, and Autoflush feature ensure continual reliable operation

- Seasonal shutdown mode – printer is ready to print first time, even after extended shutdown, with no need for expensive printer flushing.

## Flexible coding with more printing capabilities

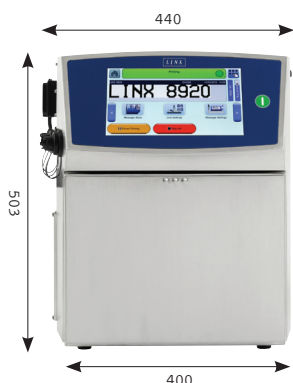
- Code up to five lines of code, including 2D barcodes
- Coding at faster line speeds as standard – up to 6.25m/s for one line of code
- Carton coding option, up to 20mm high print
- Sequential text and flexible sequential number printing to provide more traceability and product identification options
- Real-time output on screen – meet your OEE targets with the printer screensaver 'On/Off target'; identify patterns in overall line downtime with the output/downtime reporting feature, and improve your efficiencies.



## Linx 8920

### Dimensions (mm)

#### Front Elevation



#### Side Elevation



#### Printhead



60mm minimum bend radius in static applications

180mm minimum bend radius in dynamic applications

### Print speeds and sizes

Printhead	Mk11 Midi
Nozzle size	62 µm
Lines of print	Up to 5
Character height range	1.8 to 12.0 mm (up to 20mm with carton coding message style)
Maximum speed: Single line print (5 dot high characters)	6.25m/s at 0.47mm drop pitch
Single line print (7 dot high characters)	4.89m/s at 0.55mm drop pitch
Two line print (7 and 5 dot high characters)	3.64m/s at 0.82mm drop pitch
Two line print (5 dot high characters)	3.44m/s at 0.43mm drop pitch
Two line print (7 dot high characters)	2.46m/s at 0.43mm drop pitch
Three line print (5 dot high characters)	2.36m/s at 0.53mm drop pitch
Four line print (7 dot high characters)	0.51m/s at 0.37mm drop pitch
Maximum message length	In excess of 1 metre
Recommended distance from printhead to substrate	12mm (35mm for carton coding message style, and larger print)

### Hardware features

- Easi-Change® Service Module, change interval: up to 24 months (18,000 hours)\*
- Unique automatic printhead flushing – typical cleaning interval 3 months (100 starts and stops)
- Printhead jet-speed control and temperature sensing for consistent printing in changing ambient temperatures
- Mistake-proof, mess-free ink and solvent refilling while printing (0.5 litre ink cartridge, 1 litre solvent cartridge)
- 10-inch full colour touch screen with tough, solvent-resistant polymer cover
- Durable ink pump with no scheduled changes required
- Extended shutdowns (up to 3 months) without printer flushing or draining
- Robust, flexible dual-tube conduit for static and moving printhead applications

### Software features

- Single-press start print, pause print and jet shutdown
- Auto power-off after jet shutdown
- Simple WYSIWYG message creation and editing with drag-and-drop field positioning and zoom function for long messages
- Total print count, message count and batch count
- WYSIWYG message store display and message style selection
- Password-protected functions, with customisable user profiles
- Message creation/editing while printing
- On-screen system monitoring, to measure key ink system and environmental parameters, to help avoid unscheduled stoppages
- On-screen output rate measurement, estimated job completion time, on/off target indication
- On-screen production stoppage logging tool, customisable stoppage event descriptions, auto detection of stoppages
- Output, production line stoppage and message print history log exported using USB port
- On-screen fluid level indicators, 12 hour running from fluid refill warning to printer stop in most applications
- On-screen help and diagnostics information
- PrintSync® automatic font and message format selection, based on message style selected and production line speed
- Multiple operator languages (user selectable) with on-screen keyboards, secondary keyboard for multi-language printing
- Simple line speed and shaft encoder setup wizard, for installation on new production lines
- Up to 50 line settings can be stored, with individual line names
- Message store and printer settings backup, copy and restore using USB storage device
- Simple Communications Protocol (YAML based scripts) and Linx Remote Communications Interface for connection to PCs or PLCs using Ethernet port or optional RS232 port

### Message printing facilities

- Text, symbols and numbers
- Prompted fields for one-step message editing with customisable on-screen prompts
- Height, width and delay functions for easy code sizing and positioning
- Automatic formats for printing dates and times (using the printer's internal clock)
- Automatic date forward function. Add number of seconds, minutes, hours to the current time, or number of days, weeks or months to the current date
- Automatic time adjustment option for daylight savings time
- Sequential numbering, forward and backward counting, variable intervals, multiple number ranges, alphanumeric sequencing
- One touch sequential number reset option from the printer screen, and reset using external trigger
- Sequential text fields, increment and reset sequences using external triggers, optional one touch sequence reset from the printer screen
- Number of messages stored: up to 1000 using internal printer memory (depending on message content), more can be stored using a USB storage device
- Bold character printing (up to 9 times)
- Rotated character (tower) printing
- Shift coding (message content changes automatically at defined times)
- Graphics and logos can be imported into the printer as bitmap files using the USB port
- Reverse and inverted printing
- Barcodes (ITF 2 of 5, Code 39, Code 128, EAN 13, EAN 8, UPCA, Pharmacode, Data Matrix, QR Code)

### Printhead options

- 2m conduit
- 4m conduit
- 6m conduit
- Positive air purge to printhead (provides improved reliability in dusty or humid environments)

### Ink range

- Linx MEK base (dye-based)
- Linx mixed base (MEK-free, dye based)
- Linx ethanol base (MEK-free, dye based)

### Connections/interfacing for

- Product detector
- Shaft encoder/second product detector
- External single-stage alarm output (24v)
- USB
- Ethernet
- Volt-free contact alarm connection (e.g. for use with external mains-driven alarm)
- Dual alarm output (Volt-free and 24V output)
- RS232

### Physical characteristics

Base and enclosure	Stainless steel
IP55 environmental protection rating**	•
Mounting options	Static stand, mobile stand, bench, shelf for wall mounting
Operating temperature range	0 – 50°C for 1240, 1010, 1014 and 3240 ink types, (5-45°C for other MEK base, Mixed base, Ethanol base ink types)
Humidity range (r.h., non-condensing)	90% max
Power supply	100-230V, 50/60Hz
Power consumption	38W (typical when printing)
Power rating	150 W
Weight	24.5kg (including fluids and printhead)

### Regulatory approvals

- GS • CE • EAC • NRTL • FCC

Key • standard ○ option \*interval may be adjusted in certain environments and applications to provide reliable running between service module changes \*\*IP rating is independently verified – certificates available on request

www.linxglobal.com

MP42171



For more info, please contact Presa NV, Brusselssesteenweg 558, 3090 Overijse, Belgique.  
Phone +32 2 657 02 22 E-mail: [marketing@presa.com](mailto:marketing@presa.com) [www.presatendeur.eu](http://www.presatendeur.eu)